

Alarm call

Alarm call

Fire or accident - call 0-1-1-2 (dial 0 for the outside line).

Disclose

Who is calling

What has happened

Where it has happened (Ved Fjorden 13, 4700 Næstved + division/location)

Who may be injured

Remember

To send a person outside to meet the ambulance.

Adresses

Næstved Waste to Energy Plant

Ved Fjorden 20

4700 Næstved

Tlf. (+45) 5575 0800

Næstved Waste to Energy Plant South

Ved Fjorden 13

4700 Næstved

Tlf. (+45) 5575 0800

Find all leaflets: affaldplus.dk/publikationer

Administration:

AffaldPlus

Ved Fjorden 20

4700 Næstved

Tlf. (+45) 5575 0800

affaldplus@affaldplus.dk

www.affaldplus.dk

Subcontractors

Næstved Waste-to-Energy Plant & Næstved Waste-to-Energy Plant South



We want a good physical and mental working environment

This folder has been prepared as information for external tradesmen, contractors, service employees, etc.

We place high demands on ourselves in regard to the area of environment and health and safety. But we also place the same demands on you who work for AffaldPlus. Your handling of health and safety is of great importance to everyone who works for and with AffaldPlus.

You will be informed about special working conditions before you start working at AffaldPlus, and a contact person from AffaldPlus will be linked to you. This contact person will help you become familiar with the tasks that need to be performed.

You must ALWAYS have this folder with you when you are working at the AffaldPlus Waste-to-Energy Plant.

Environmental policy

At AffaldPlus we will continuously reduce our environmental impact.
Read more at www.affaldplus.dk.

Health and safety policy

See examples for review.

Take care of yourself and those around you

Contact information

Controlroom Næstved Waste-to-Energy Plant: tlf. (+45) 5575 0835

Emergency assistance equipment

Overviews of the area's emergency equipment are displayed at the entrances.

The location of defibrillators are indicated on map in this folder.

Meeting point in the event of fire

Næstved Waste-to-Energy Plant: The parkin space by administration - see the map in this folder (please note that in the event of an alarm, you may not use the elevator).

If this is not possible - outside of the entrance door to the stairwell - see the map in this folder.

We want to provide effective instruction

Name of your contact person

Telephone number

Receipt that the folder has been read and understood:

Date

Signature

You must always have this folder with you, when you are working at the AffaldPlus plant.

Take care of yourself and those around you!

We want to inform about safety

Upon arrival at the plant, you must register your arrival outside the control room.

Remember also to register your exit before you leave AffaldPlus' area.



You will find this folder and a log book outside the control room.

No task may be initiated before permission is given by your contact person.

We will make an active effort to improve the internal health and safety

Layout of the workplace

- Corridor areas must always be kept tidy
- Respect barriers and no entry/prohibited signs
- Placing anything in front of fire extinguishing equipment and escape routes is not permitted
- Before you begin working, you must ensure that the installation is secured mechanically and electronically
- Tools, machines, etc. may not be left unattended
- Nuisance from dust must be limited
- As far as possible, noise must be limited to the work area, and may perhaps only occur at specific times
- Arrangements must be made regarding:
 - Closing of water and electricity supply
 - Locking of buildings or construction site at the end of the work day
 - Cleaning and possible disposal of waste from the workplace
 - Work on the intake funnel level must be arranged with the operator
 - Lending of special tools.
- Equipment that is brought along, such as electrical and mechanical equipment, lifting gear, ladders and safety equipment must be checked and maintained according to applicable regulations
- In the event of hot work, you must know where the nearest fire extinguishing equipment is located
- Pressure cylinders may not be left with pressure in the hoses. Pressure cylinders must be gathered after completion of the work at a location indicated by AffaldPlus. Ask your contact person if you are in doubt
- Mobile emergency lights may not be used for work lighting
- Parking is only permitted in the indicated areas or in the marked bays
- Crew and accommodation site huts may only be set-up following agreement
- Food may only be consumed in the canteen or crew site hut
- If the fire alarm sounds, you must go to the meeting point - see the map in this folder (please note that when the alarm sounds you may not use the elevator).

**Non-compliance of safety regulations can lead to expulsion.
In the event of repeated non-compliance
this will result in exclusion.**

We will communicate openly - internally and externally - about our environmental responsibility

Products that are subject to the compulsory labelling requirement - training and certificates

Products that are subject to the compulsory labelling requirement

For every product subject to the compulsory labelling requirement, the Workplace User Instructions (ArbejdsPladsBrugsanvisning - APB) must be available.

Training and certificates

You must be able to produce a course diploma or certificate upon request (e.g. for work with a crane, truck, epoxy, welding, etc.).

Hot work

When performing hot work, you must – if requested – be able to show (or a course certificate (valid certificate)). It is the subcontractor's responsibility to establish a fire watch during the work and to make sure that the work is performed according to the rules in force.

Occupational accidents and almost-accidents

All occupational accidents and near miss must be reported to your contact person who will ensure that they are registered. This is important in order to prevent and maintain a good working environment.

Almost-accidents are events where an accident could happen but where, fortunately, nothing did happen.

We want to safeguard employees against unnecessary dust, noise, emission, cold etc.

Personal protective gear

- The use of personal protective gear is mandatory where indicated by signs
- Hearing protection is mandatory with a noise intensity of 85 dB or above
- A safety helmet must be worn everywhere in the plant.



Regulations for Næstved Waste-to-Energy Plant South

For work outside of normal working hours, the following applies:

- The work must always be arranged with the contact person
- Cranes, trucks and hoisting lifts may not be used without agreement with the contact person
- When leaving Næstved Waste-to-Energy Plant South, the control room at Næstved Waste-to-Energy Plant must be notified. See the telephone number under "Contact information"
- In the event of accident or fire, either the staff on call or the control room at Næstved Waste-to-Energy Plant must be contacted after calling the emergency call centre.

We will continuously reduce environmental impact

Waste sorting, alcohol, intoxicants and smoking

Waste sorting

At AffaldPlus, we see waste as a resource that can be recycled for the production of new products if the waste is correctly sorted. Therefore, all craftsmen at our plant must sort their waste and deliver it to the sorting island, unless otherwise agreed before commencement of the work. Sorting must be carried out according to the signs on the containers. See where the sorting island is located on the map in this folder.

Ask your contact person for advice about sorting if you are in doubt.

Alcohol and intoxicants

Everyone who works at and for AffaldPlus must turn up for work sober and unaffected by intoxicants. Consuming alcohol or other intoxicants drugs is NOT permitted at AffaldPlus' plant.

Smoking

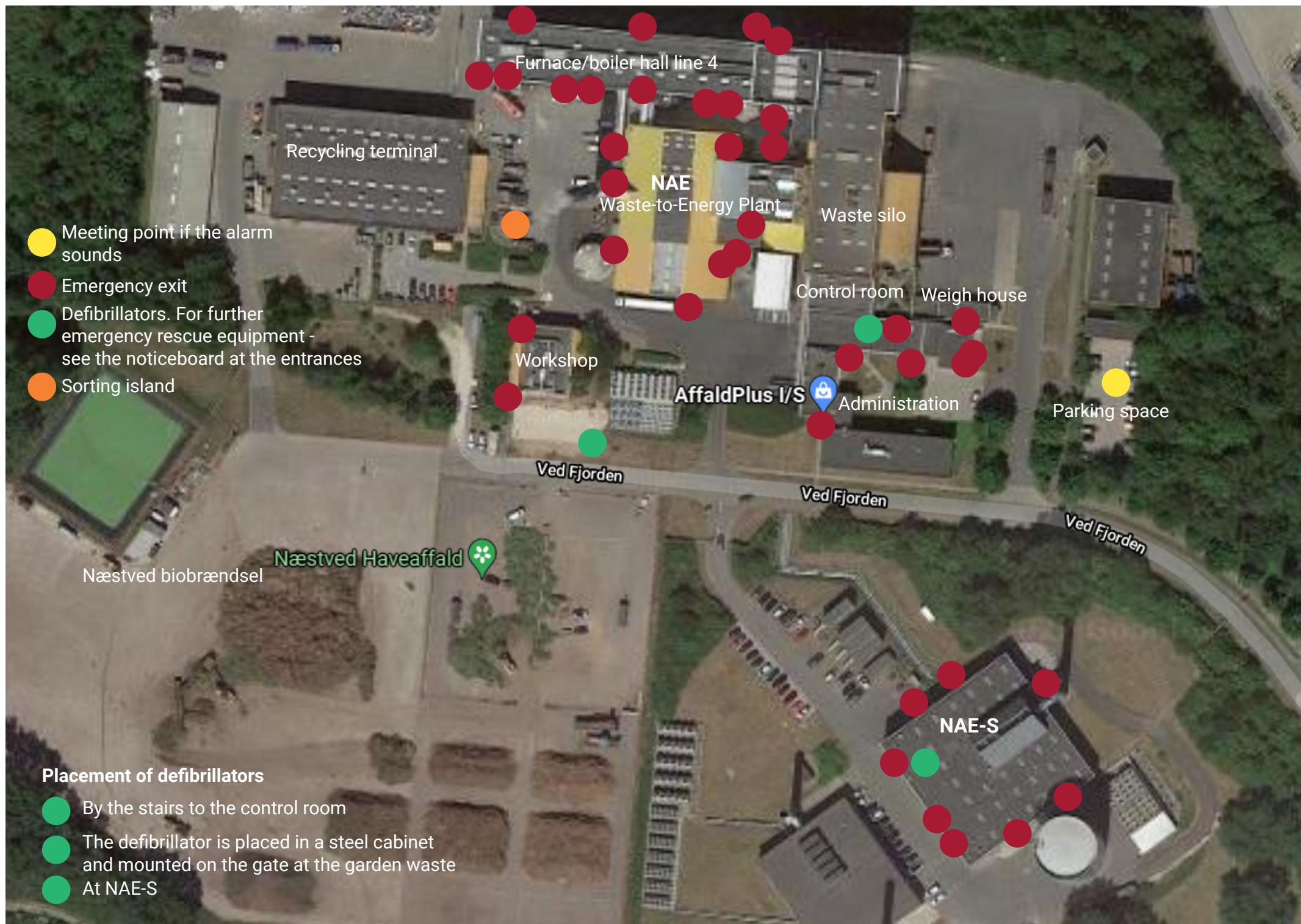
It is not allowed anywhere on AffaldPlus' facilities or properties. This also applies to E-cigarettes. Subcontractors working for AffaldPlus are also not allowed to smoke in the immediate vicinity of gates or similar entries to the properties of AffaldPlus.

Alcohol and intoxicants

Consuming alcohol or other intoxicants is NOT permitted at AffaldPlus' plant.

Smoking

Smoking is not allowed anywhere on AffaldPlus' facilities or properties. This also applies to E-cigarettes. Subcontractors working for AffaldPlus are also not allowed to smoke in the immediate vicinity of gates or similar entries to the properties of AffaldPlus.



- Meeting point if the alarm sounds
- Emergency exit
- Defibrillators. For further emergency rescue equipment - see the noticeboard at the entrances
- Sorting island

Placement of defibrillators

- By the stairs to the control room
- The defibrillator is placed in a steel cabinet and mounted on the gate at the garden waste
- At NAE-S